



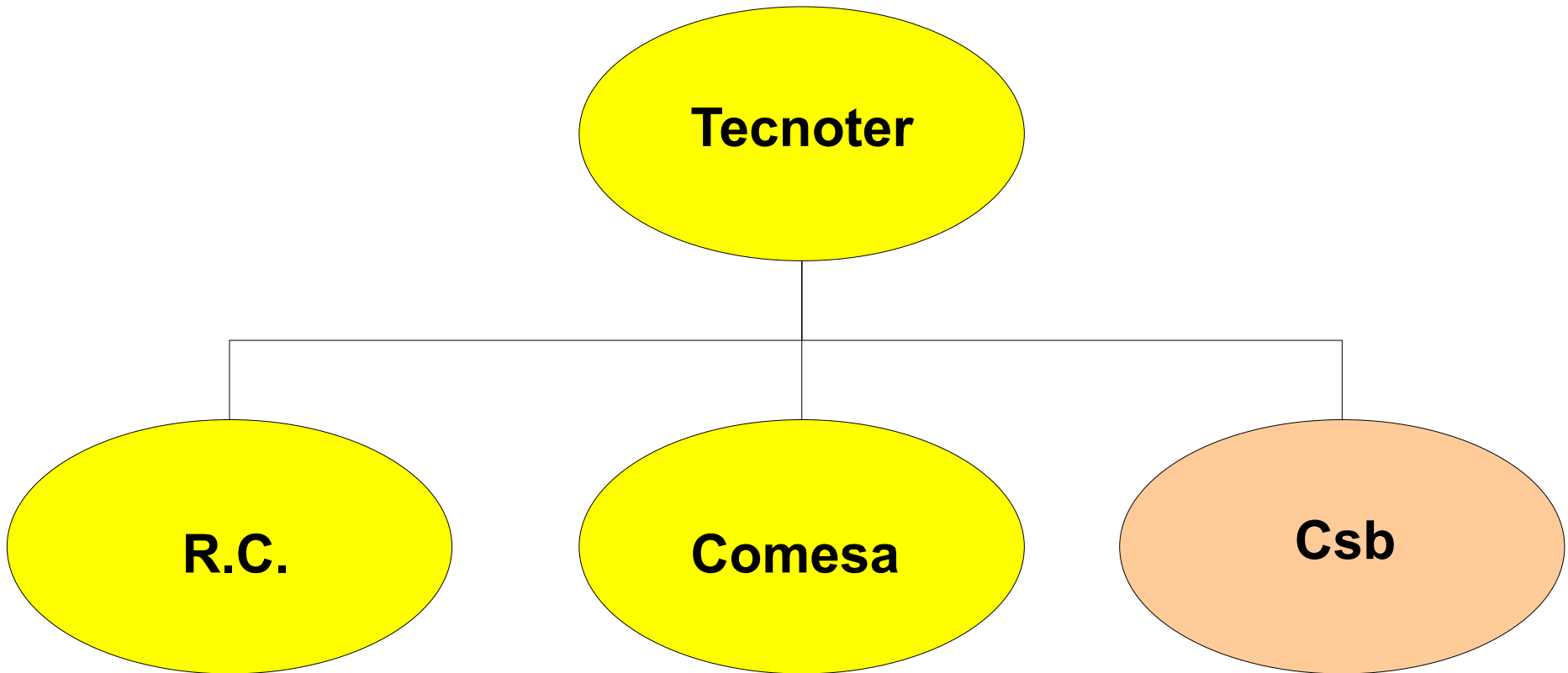
TECNOTER

Retrofit Kits

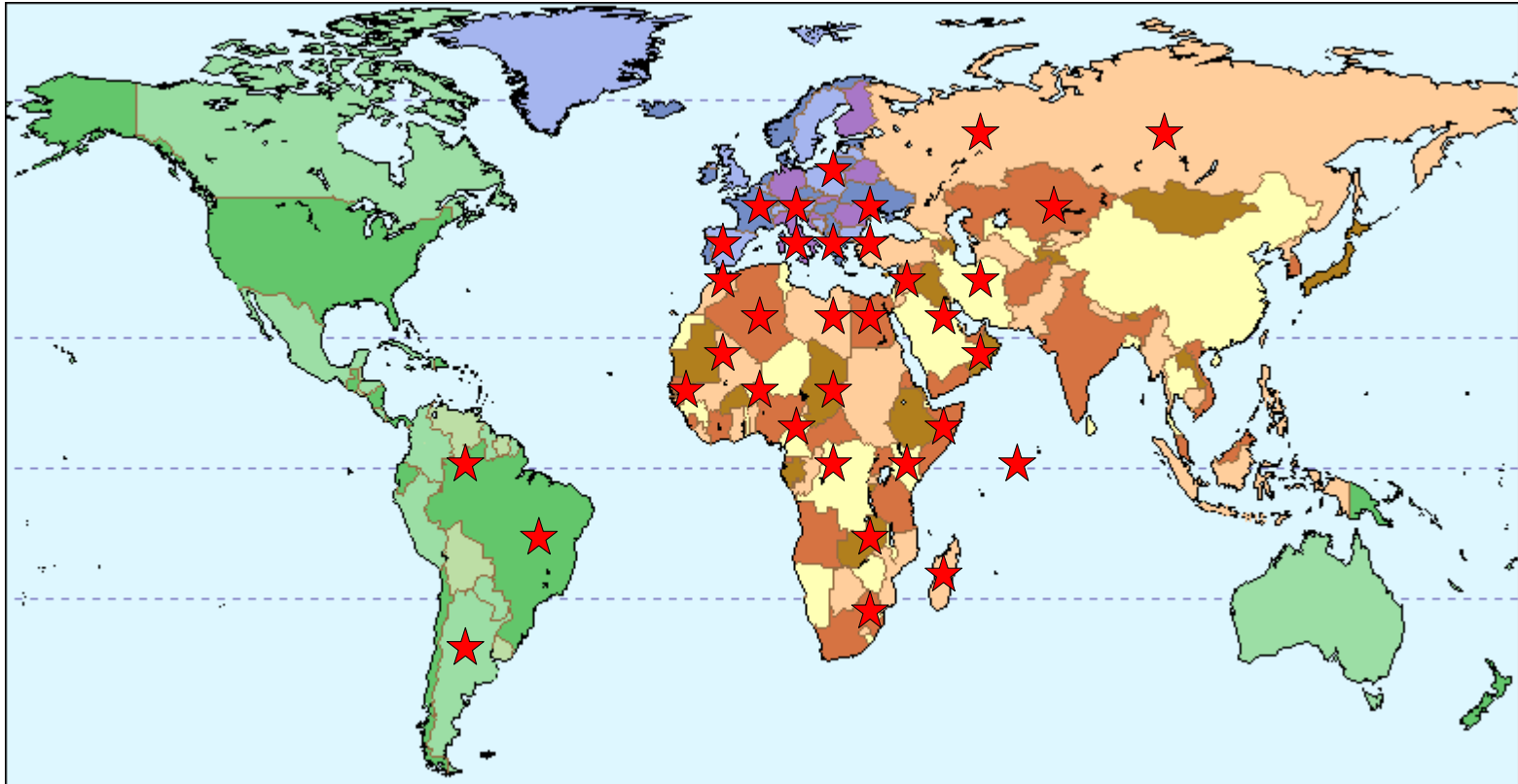


www.tecnotersrl.it

The Group:



Dealers location:



Our clients:

Manufacturers

Atlas Copco It.
Caterpillar w.t.
Cosben
Jcb
Komatsu U.E.
Hammer
Ihimer
Indeco
Italdem
Romea
etc.

Dealers

Al-Bahar (Cat)
Barloworld (Cat)
Bergerat (Cat)
Dmo (Doosan)
HFF (Cat)
Hitesca (Hyundai)
JA Delmas (Cat)
Scai (Hitachi)
Seima (Hitachi)
Teknox (Cat)
Tractafric (Cat)
Zeppelin (Cat)
etc.

The Production:

Oil -Hydraulic kits

One way
Two ways
Medium pressure
Merged flow
Priority flow
Security valves
Railway upgrade
Auxiliary controller
3° way
Lift controller
Current generator
etc.

Ecology

Fog cannon
Dust reduction for excavator
Dust reduction for crusher
Washing system for tires
Washing platform

Special equipments

Stick extension
Sliding arm
Remote controller
Hydraulic magnet
Hyd. current generator
Hyd. air compressor

Oil hydraulic kits:

“O” Series: 100% original. Any part (or group) is replaceable with a original part
No extra stock for spare parts
No specific training
Family feeling

“N” Series: Same quality, lower price
Hydraulically and electrically similar to the “O” series
Large number of available configurations

“E” Series: Jic connections for special markets
Cheaper then the other series
Specific for South America and Meddle East

Oil hydraulic kits:



Loaders



Excavators



**Special
machinery**

Oil hydraulic kits:

Excavators: One way for hammer use
Two ways
Upgrade one way → two ways
Merged flow (two pumps flow)
Medium pressure
Railway kit for wheeled excavators
Priority flow for vibrating hammer
Extra drain
Cutting bucket
Quick hitch
Security valves for cylinders
Electronic flow and pressure control (auxiliary controller)
Magnet control system
Hammer pressurization line
Telemetry
Greasing kit
etc.

Oil hydraulic kits:

Loaders and BHL:

- One way for hammer use
- Two ways
- Upgrade one way → two ways
- Medium pressure
- 3° and 4° way
- Priority flow for frontal attachments
- Priority flow for rear attachments
- Extra drain
- Cutting bucket
- Quick hitch
- Security valves for cylinders
- Electronic flow and pressure control (auxiliary controller)
- Greasing kit
- etc.

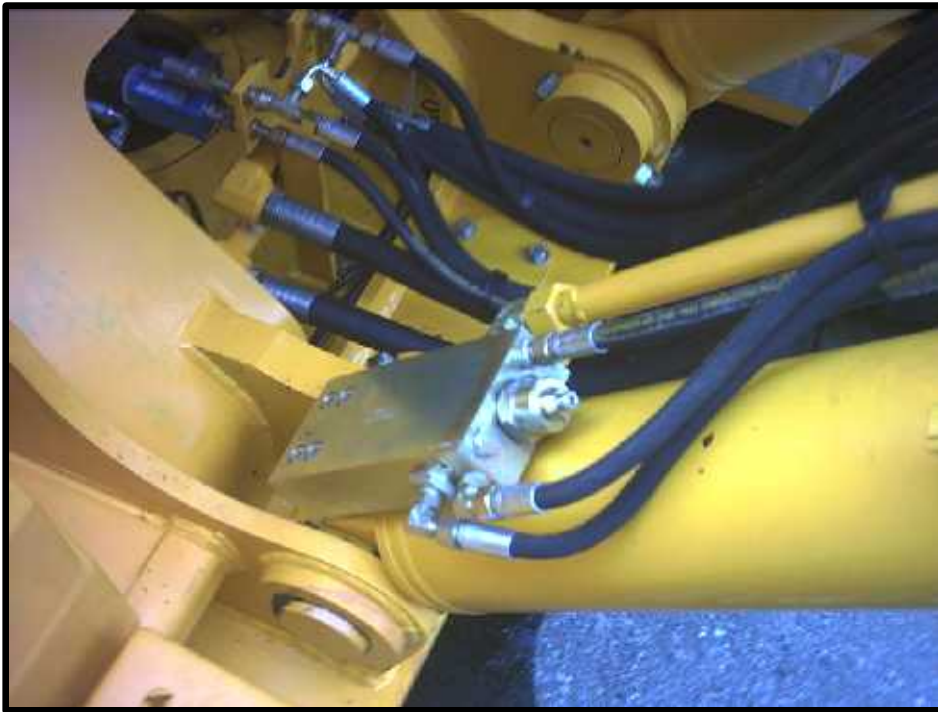
Kits “O” series:



Available for:

Caterpillar – CNH – Hitachi
Jcb – Komatsu – Volvo

Kits “N” series:



Available for:

Caterpillar – CNH –
Doosan – Fiat Hitachi
Hitachi – Hyundai - Jcb
Kobelco - Komatsu – Volvo

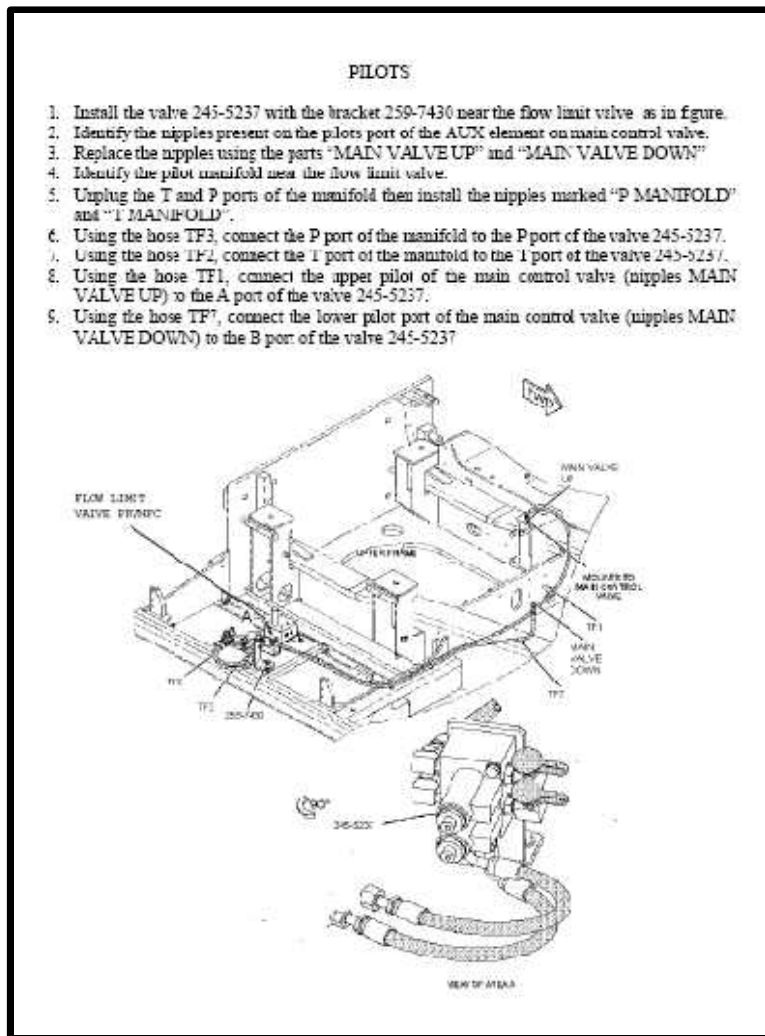
Kits “E” series:



Available for:

Caterpillar – CNH –
Doosan – Fiat Hitachi
Hitachi – Hyundai - Jcb
Kobelco - Komatsu – Volvo

Manuals:



- Easy to read
- Follow the style of the brand's manuals
- Available on Tecnoter web site
- Include schematic and specifications
- Large illustrations

Support and Training:



- Sales support
- Technical support
- Workshop training
- Field training

Kit pictures:



Ecology:

Fog cannon for dust suppression

Dust reduction for excavator

Dust reduction for driller

Dust reduction for crusher

Tires washing system

Tires washing system on demountables chassis

Fog cannon:



- Full modular
- 20 – 120 mt. range
- Adjustable flow
- Strong and reliable

Dust reduction for excavator:



- 100% on board
- Very low water use
- Programmable
- Over 120 bar

Dust reduction - tunnel:



- Suitable for CR ex.
- Very low water use
- Tunnel tested
- Over 150 bar

Ecology platforms:



- Very low profile
- No tools installation
- Stop contamination
- Easy transportable

Tires washing system:



- Easy transportable
- Different versions
- 1 – 6 m³/min flow
- Extremely reliable

Dem. tires washing system:



- Easy transportable
- No installation
- 1 – 2 m³/min flow
- Ideal for renting

Special equipments:

Stick extension

Sliding arm

Remote controller

Hydraulic magnet

Hyd. current generator

Hyd. air compressor

Stick extension:



- Excavator: 15 to 50 t.
- Length: up to 6.1 mt
- Full articulated
- Hydraulic on board(*)

Sliding arm:



- Excavator: 20 to 40 t.
- Length: up to 25 mt
- Heavy duty
- Hydraulic lines inside

Remote controller:



- Full connection
- Radio and/or GSM
- Adjustable curves
- Telemetry available

Hydraulic magnet:



- Up to 15 Kw
- Full computerized
- One or two ways flow
- No drain necessary

Hydraulic air compressor:



- Up to 7000 l/min
- Connected to the pilot lines
- Full controlled
- Inside installation

**Thank you
for your attention**